

# EXCEL 2007

## Enabling Macros

1.

The screenshot displays the Microsoft Excel 2007 interface. The title bar reads "ULTRAdesigner.xls [Compatibility Mode] - Microsoft Excel". The ribbon includes "View", "Developer", "Add-Ins", "Acrobat", and "SpreadsheetConverter v5". The "Excel Options" dialog box is open, with the "Excel Options" button highlighted by a red box. The background spreadsheet shows data for "ULTRAdesigner.xls" with sections for "RUCTION", "SITE", and "AN". A graph at the bottom right shows "Moment (kNm/m)" vs "Offset (m)".

**Excel Options Dialog:**

- Excel Options
- Exit Excel

**RUCTION Table:**

Value	Utilization	Pass/Fail
12.9 kNm/m	0.92	Pass
Varies	0.55	Pass
-6.2 / 15.2 kNm/m	0.46	Pass
6.5mm (Span/632)	0.51	Pass
3.7mm (Span/424)	0.64	Pass

**SITE Table:**

Value	Utilization	Pass/Fail
36.6 kNm/m (midspan)	0.90	Pass
Total Length (mm) 3500		Pass
Varies (mm) 3500	0.67	Pass
Varies	0.67	Pass
4.6mm (Span/883)	0.28	Pass
2.5mm (Span/1658)	0.30	Pass
11.1mm (Span/363)	0.68	Pass
A2		Pass

**AN Table:**

Value
3.52 kPa (118.8mm average topping concrete)
DESIGN 7.22 DL + 12.93 LL = 28.06 Ult (kN/m)
DESIGN 7.22 DL + 12.93 LL = 28.06 Ult (kN/m)
12.41 Hz

**Graph:** Moment (kNm/m) vs Offset (m). Note: 100% Live Load Pattern has been adopted!

**END MOMENTS Section:**

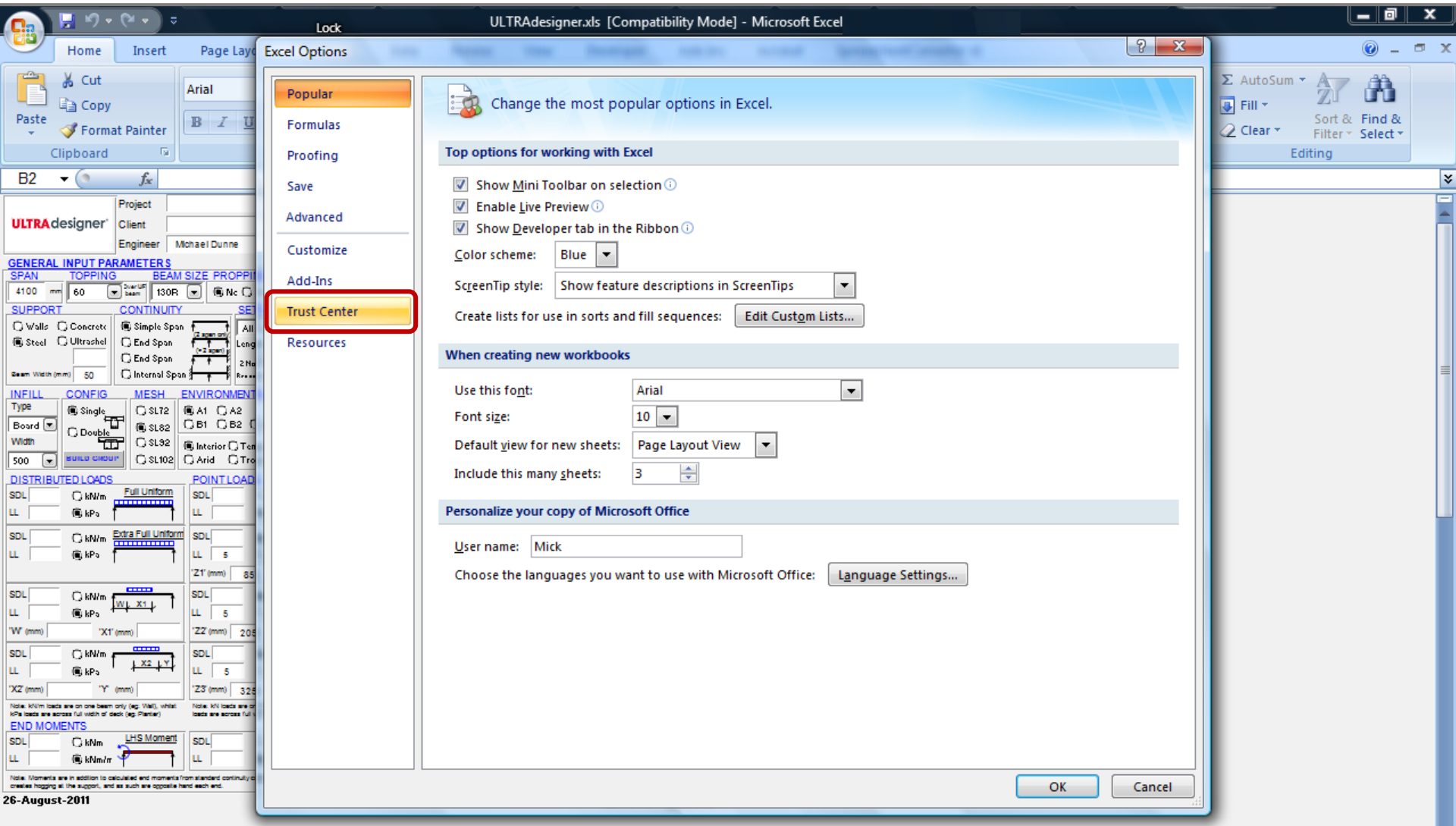
- LHS Moment: SDL (kNm), LL (kNm/m/r)
- RHS Moment: SDL (kNm), LL (kNm/m/r)

**Footer:** 26-August-2011 ULTRAdesigner 2.8

# EXCEL 2007

## Enabling Macros

2.



# EXCEL 2007

## Enabling Macros

3.

Lock ULTRAdesigner.xls [Compatibility Mode] - Microsoft Excel

Excel Options

- Popular
- Formulas
- Proofing
- Save
- Advanced
- Customize
- Add-Ins
- Trust Center**
- Resources

Help keep your documents safe and your computer secure and healthy.

### Protecting your privacy

Microsoft cares about your privacy. For more information about how Microsoft Office Excel helps to protect your privacy, please see the privacy statements.

- [Show the Microsoft Office Excel privacy statement](#)
- [Microsoft Office Online privacy statement](#)
- [Customer Experience Improvement Program](#)

### Security & more

Learn more about protecting your privacy and security from Microsoft Office Online.

- [Microsoft Windows Security Center](#)
- [Microsoft Trustworthy Computing](#)

### Microsoft Office Excel Trust Center

The Trust Center contains security and privacy settings. These settings help keep your computer secure. We recommend that you do not change these settings.

**Trust Center Settings...**

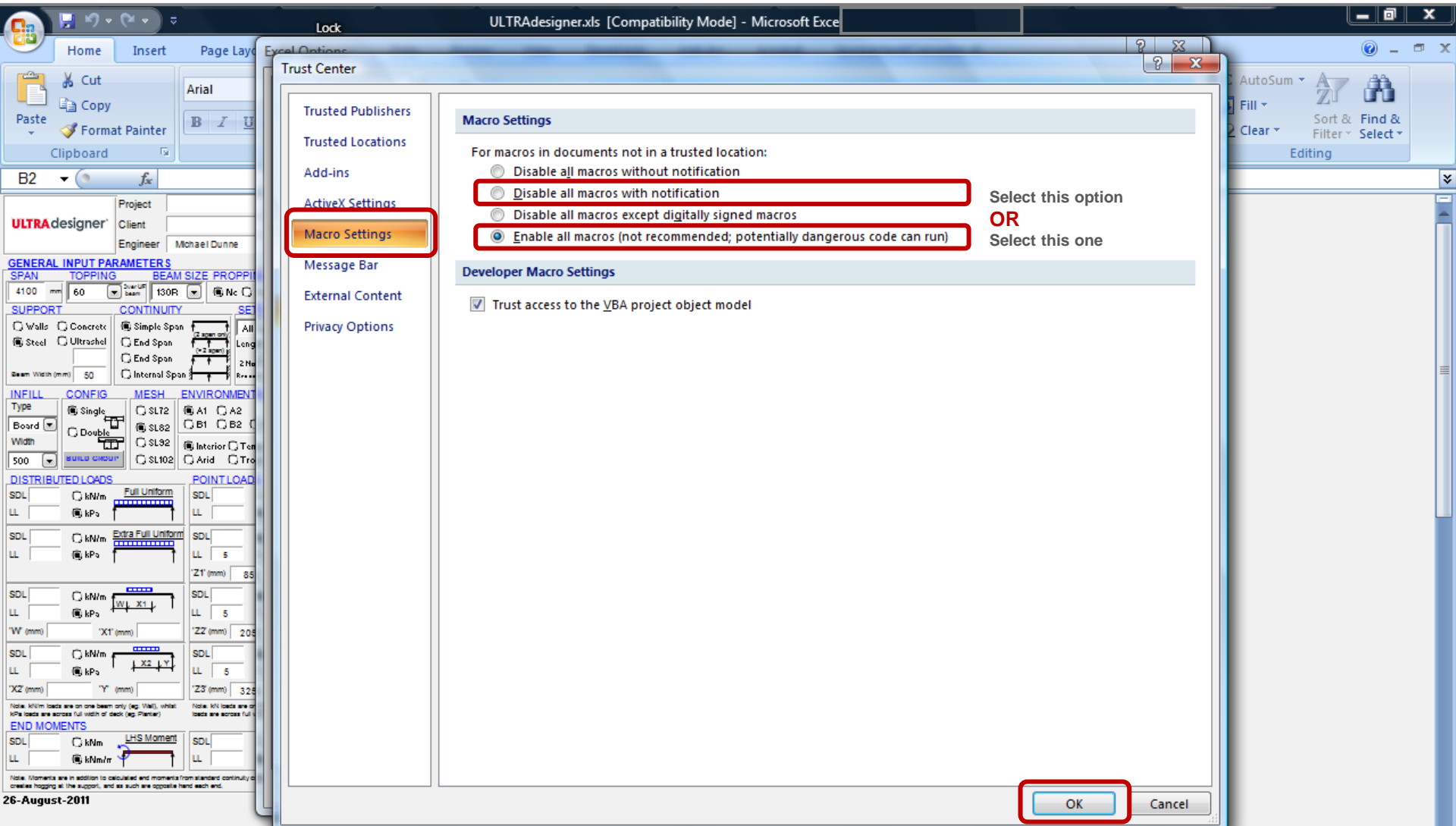
OK Cancel

26-August-2011

# EXCEL 2007

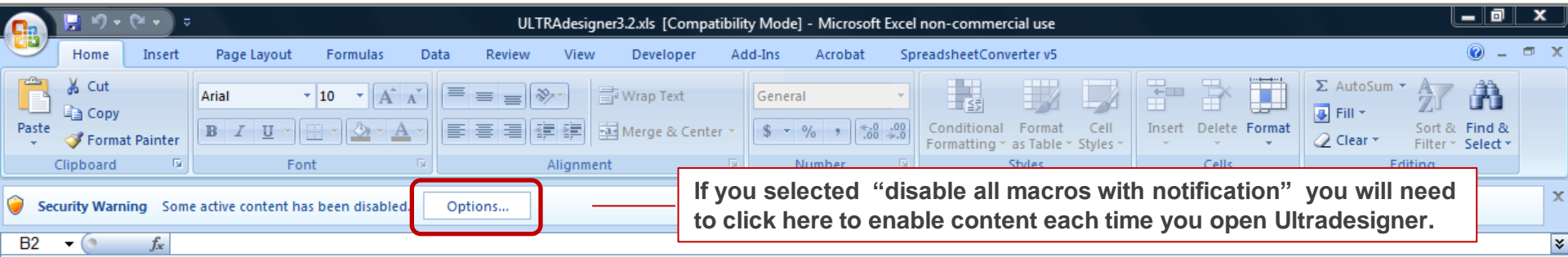
## Enabling Macros

4.

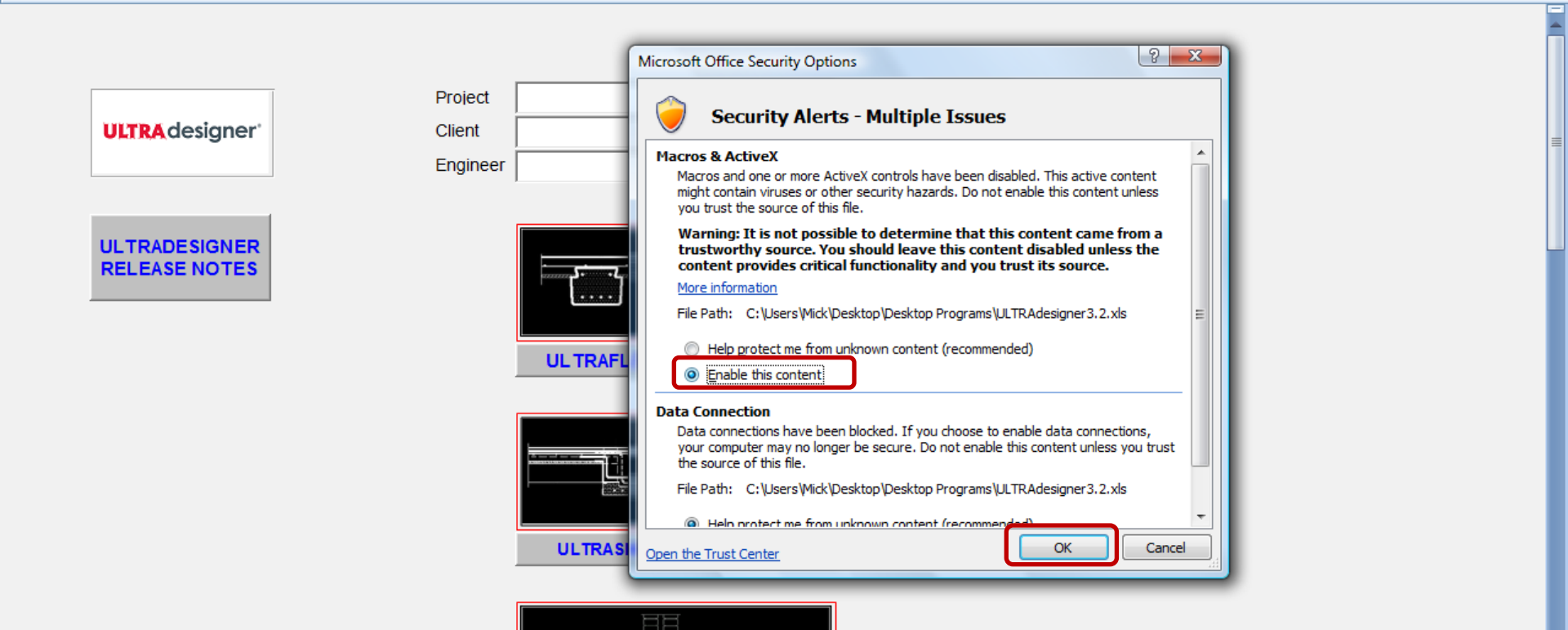


# EXCEL 2007

## Enabling Macros



If you selected "disable all macros with notification" you will need to click here to enable content each time you open Ultradesigner.



Microsoft Office Security Options

### Security Alerts - Multiple Issues

**Macros & ActiveX**  
Macros and one or more ActiveX controls have been disabled. This active content might contain viruses or other security hazards. Do not enable this content unless you trust the source of this file.

**Warning: It is not possible to determine that this content came from a trustworthy source. You should leave this content disabled unless the content provides critical functionality and you trust its source.**

[More information](#)

File Path: C:\Users\Mick\Desktop\Desktop Programs\ULTRAdesigner3.2.xls

Help protect me from unknown content (recommended)

**Enable this content**

**Data Connection**  
Data connections have been blocked. If you choose to enable data connections, your computer may no longer be secure. Do not enable this content unless you trust the source of this file.

File Path: C:\Users\Mick\Desktop\Desktop Programs\ULTRAdesigner3.2.xls

Help protect me from unknown content (recommended)

[Open the Trust Center](#)

**OK**  Cancel