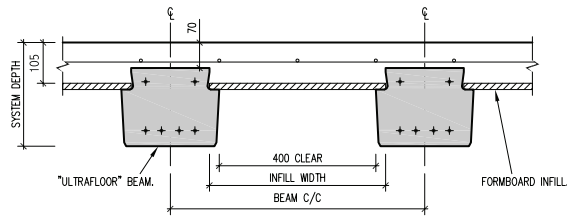
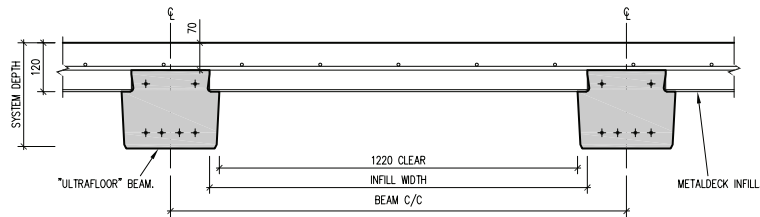


## ULTRAFLOOR SPAN TABLE - FORMBOARD & METALDECK INFILL

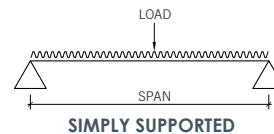
Ultrafloor system	Infill width mm	Beam c/c mm	Total system depth mm	Self weight kPa	Relative cost	Maximum un-propped span mm	1.5 kPa LL Max spans mm			2.0 kPa LL Max spans mm			3.0 kPa LL Max spans mm			5.0 kPa LL Max spans mm			10.0 kPa LL Max spans mm			
							Simply supported	Continuous end span	Continuous internal span	Simply supported	Continuous end span	Continuous internal span	Simply supported	Continuous end span	Continuous internal span	Simply supported	Continuous end span	Continuous internal span	Simply supported	Continuous end span	Continuous internal span	
<b>FORMBOARD</b>	<b>130R</b>	450	530	200	3.56	0.97	<b>3700</b>	5800	6900	8100	5700	6800	8000	5500	6400	7800	5100	6000	6800	4100	4300	5200
	<b>130M</b>	450	590	200	3.65	1.07	<b>4600</b>	5800	6900	8300	5700	6800	8100	5500	6700	7900	5300	6200	6700	4900	4900	5200
	<b>150R</b>	450	530	220	3.55	1.00	<b>4300</b>	6100	7500	8800	6000	7300	8600	5900	7100	8400	5600	6700	7200	4900	5100	5500
	<b>150C</b>	450	650	220	3.88	1.17	<b>5700</b>	6700	8100	9200	6600	8000	9100	6400	7700	8800	6100	6800	7200	5600	5300	5600
	<b>200R</b>	450	530	270	4.07	1.05	<b>5500</b>	7500	9100	10200	7400	9000	10100	7200	8700	9800	6700	7700	8200	5300	5600	6400
	<b>200C</b>	450	650	270	5.53	1.26	<b>7300</b>	8700	9500	10700	8600	9400	10600	8400	8900	10000	8100	7800	8300	6500	6200	6500
	<b>250M</b>	450	590	320	4.54	1.22	<b>8300</b>	9500	10700	12000	9400	10500	11900	9300	10100	11300	8600	8800	9300	6900	7000	7300
<b>250C</b>	450	650	320	5.05	1.35	<b>9100</b>	9900	11000	12000	9800	10900	12000	9600	10500	11600	9300	9200	9600	8100	8100	7600	
<b>METALDECK</b>	<b>130M</b>	1270	1410	200	3.53	0.92	<b>3100</b>	5400	6400	7800	5300	5800	7400	5200	5000	6300	4800	3900	5000	N/A	N/A	N/A
	<b>150C</b>	1270	1470	220	3.53	0.97	<b>4100</b>	6100	7400	8700	6000	7300	8600	5800	7000	8300	5300	5500	6900	N/A	N/A	N/A
	<b>200C</b>	1270	1470	270	3.92	1.01	<b>5400</b>	7300	8900	10000	7200	8800	9900	6600	8100	9600	5800	6800	8000	N/A	N/A	N/A
	<b>250M</b>	1270	1410	320	3.97	0.98	<b>6000</b>	7700	9600	10700	7400	9200	10600	6800	8500	10500	5900	6700	8400	N/A	N/A	N/A
	<b>250C</b>	1270	1470	320	4.06	1.05	<b>6700</b>	9300	10200	11500	8900	10100	11400	8200	9500	11100	7200	8300	9400	N/A	N/A	N/A



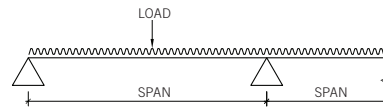
TYPICAL FORMBOARD SECTION



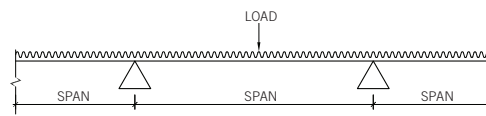
TYPICAL METALDECK SECTION



SIMPLY SUPPORTED



CONTINUOUS END SPAN



CONTINUOUS INTERNAL SPAN

### DESIGN ASSUMPTIONS

1. Super imposed dead load of 1.0 kPa
2. 32 MPa insitu concrete
3. SL82 mesh
4. N16 @ 200 c/c over support walls for continuous design (Note that because of this assumption, some continuous spans will be less than simply supported spans)
5. Incremental deflection limited to L/500
6. Long term deflection limited to L/250
7. Natural frequency of the slab limited to 5.0Hz
8. Wall support width is 150mm with a full depth concrete zone of 250mm each side of the wall
9. Un-propped spans based on wet concrete and a 1.0 kPa construction load
10. Relative cost based on 1000m2 of Ultrafloor in the Sydney area
11. Adjacent spans assumed to be the same
12. For our 250C system we would recommend a minimum of 80mm over the rib i.e. min 330mm system depth due to potential hog in the beam

For detailed designs including the self weight of the Ultrafloor slabs please use our UltraDesigner software which is available for download at [ultrafloor.com](http://ultrafloor.com) or contact the Ultrafloor technical department on 1800 858 723.

## ULTRAFLOOR PRODUCT RANGE

	'R' Beams	'M' Beams	'C' Beams
130	<p>32 kg/m</p>	<p>51 kg/m</p>	
150	<p>39 kg/m</p>		<p>84 kg/m</p>
200	<p>54 kg/m</p>		<p>114 kg/m</p>
250		<p>107 kg/m</p>	<p>145 kg/m</p>

	600 Ultrashell	1200 Ultrashell
100	<p>120 kg/m</p>	<p>240 kg/m</p>
150	<p>150 kg/m</p>	<p>300 kg/m</p>
200	<p>185 kg/m</p>	<p>370 kg/m</p>
250	<p>220 kg/m</p>	<p>440 kg/m</p>

80 x 110 Ultralintel	170 x 110 Ultralintel	600 Wide Megabeam
<p>21 kg/m</p>	<p>45 kg/m</p>	<p>750 MAX.</p>