

"ULTRAFLOOR" 130R BEAM

SCALE 1:10

ULTRAFLOOR BEAM STRAND LOCATIONS

MASONRY ANCHORS FIXING INTO BEAMS SHALL BE LOCATED TO MISS STRAND LOCATIONS.
 ULTRAFLOOR SHALL BE CONTACTED FOR APPROVAL OF FIXING TO ULTRAFLOOR BEAMS
 PRIOR TO PROCEEDING.

CONSTRUCTION TOLERANCE

ULTRAFLOOR BEAMS HAVE A ± 5mm TOLERANCE.

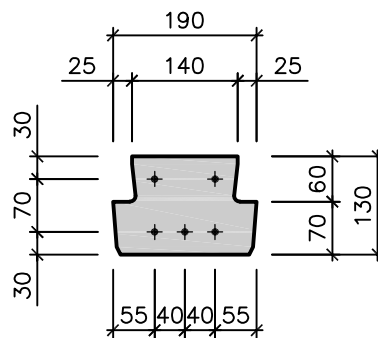
0	N.H.	ISSUED FOR INFORMATION.	01/10/20
ISSUE	BY	DETAILS	DATE

ULTRAFLOOR[®]
 ultrafloor (aust) pty ltd

DRAWING TITLE:
**ULTRAFLOOR 130R BEAM
 PROFILE**

DWG No: SDP-130R

ISSUE: 0



"ULTRAFLOOR" 130M BEAM

SCALE 1:10

ULTRAFLOOR BEAM STRAND LOCATIONS

MASONRY ANCHORS FIXING INTO BEAMS SHALL BE LOCATED TO MISS STRAND LOCATIONS.
 ULTRAFLOOR SHALL BE CONTACTED FOR APPROVAL OF FIXING TO ULTRAFLOOR BEAMS
 PRIOR TO PROCEEDING.

CONSTRUCTION TOLERANCE

ULTRAFLOOR BEAMS HAVE A ± 5 mm TOLERANCE.

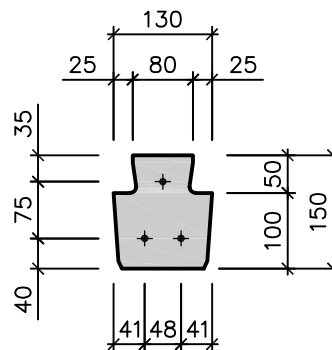
0	N.H.	ISSUED FOR INFORMATION.	01/10/20
ISSUE	BY	DETAILS	DATE

ULTRAFLOOR[®]
 ultrafloor (aust) pty ltd

DRAWING TITLE:
**ULTRAFLOOR 130M BEAM
 PROFILE**

DWG No: SDP-130M

ISSUE: 0



"ULTRAFLOOR" 150R BEAM

SCALE 1:10

ULTRAFLOOR BEAM STRAND LOCATIONS

MASONRY ANCHORS FIXING INTO BEAMS SHALL BE LOCATED TO MISS STRAND LOCATIONS.
 ULTRAFLOOR SHALL BE CONTACTED FOR APPROVAL OF FIXING TO ULTRAFLOOR BEAMS
 PRIOR TO PROCEEDING.

CONSTRUCTION TOLERANCE

ULTRAFLOOR BEAMS HAVE A ± 5mm TOLERANCE.

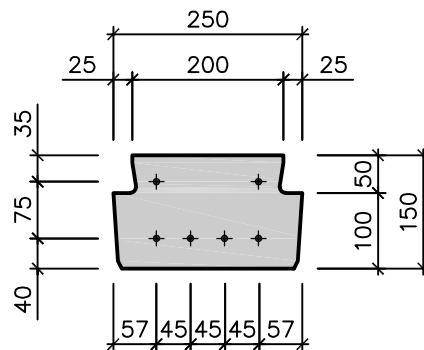
0	N.H.	ISSUED FOR INFORMATION.	01/10/20
ISSUE	BY	DETAILS	DATE

ULTRAFLOOR[®]
 ultrafloor (aust) pty ltd

DRAWING TITLE:
**ULTRAFLOOR 150R BEAM
 PROFILE**

DWG No: SDP-150R

ISSUE: 0



"ULTRAFLOOR" 150C BEAM

SCALE 1:10

ULTRAFLOOR BEAM STRAND LOCATIONS

MASONRY ANCHORS FIXING INTO BEAMS SHALL BE LOCATED TO MISS STRAND LOCATIONS.
 ULTRAFLOOR SHALL BE CONTACTED FOR APPROVAL OF FIXING TO ULTRAFLOOR BEAMS
 PRIOR TO PROCEEDING.

CONSTRUCTION TOLERANCE

ULTRAFLOOR BEAMS HAVE A ± 5 mm TOLERANCE.

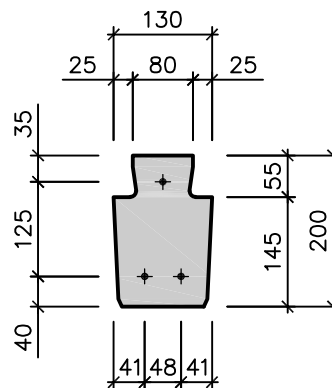
0	N.H.	ISSUED FOR INFORMATION.	01/10/20
ISSUE	BY	DETAILS	DATE

ULTRAFLOOR[®]
 ultrafloor (aust) pty ltd

DRAWING TITLE:
**ULTRAFLOOR 150C BEAM
 PROFILE**

DWG No: SDP-150C

ISSUE: 0



"ULTRAFLOOR" 200R BEAM

SCALE 1:10

ULTRAFLOOR BEAM STRAND LOCATIONS

MASONRY ANCHORS FIXING INTO BEAMS SHALL BE LOCATED TO MISS STRAND LOCATIONS.
 ULTRAFLOOR SHALL BE CONTACTED FOR APPROVAL OF FIXING TO ULTRAFLOOR BEAMS
 PRIOR TO PROCEEDING.

CONSTRUCTION TOLERANCE

ULTRAFLOOR BEAMS HAVE A ± 5 mm TOLERANCE.

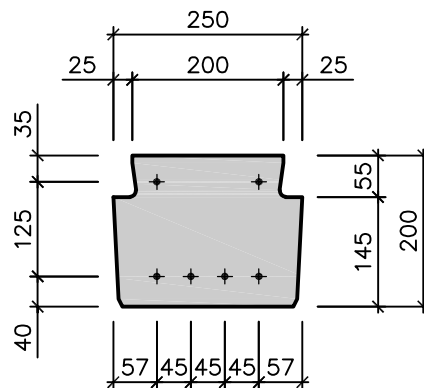
0	N.H.	ISSUED FOR INFORMATION.	01/10/20
ISSUE	BY	DETAILS	DATE

ULTRAFLOOR[®]
 ultrafloor (aust) pty ltd

DRAWING TITLE:
**ULTRAFLOOR 200R BEAM
 PROFILE**

DWG No: SDP-200R

ISSUE: 0



"ULTRAFLOOR" 200C BEAM

SCALE 1:10

ULTRAFLOOR BEAM STRAND LOCATIONS

MASONRY ANCHORS FIXING INTO BEAMS SHALL BE LOCATED TO MISS STRAND LOCATIONS.
 ULTRAFLOOR SHALL BE CONTACTED FOR APPROVAL OF FIXING TO ULTRAFLOOR BEAMS
 PRIOR TO PROCEEDING.

CONSTRUCTION TOLERANCE

ULTRAFLOOR BEAMS HAVE A ± 5 mm TOLERANCE.

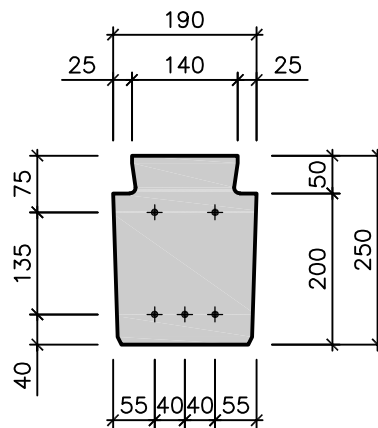
0	N.H.	ISSUED FOR INFORMATION.	01/10/20
ISSUE	BY	DETAILS	DATE

ULTRAFLOOR[®]
 ultrafloor (aust) pty ltd

DRAWING TITLE:
**ULTRAFLOOR 200C BEAM
 PROFILE**

DWG No: SDP-200C

ISSUE: 0



"ULTRAFLOOR" 250M BEAM

SCALE 1:10

ULTRAFLOOR BEAM STRAND LOCATIONS

MASONRY ANCHORS FIXING INTO BEAMS SHALL BE LOCATED TO MISS STRAND LOCATIONS.
 ULTRAFLOOR SHALL BE CONTACTED FOR APPROVAL OF FIXING TO ULTRAFLOOR BEAMS
 PRIOR TO PROCEEDING.

CONSTRUCTION TOLERANCE

ULTRAFLOOR BEAMS HAVE A ± 5mm TOLERANCE.

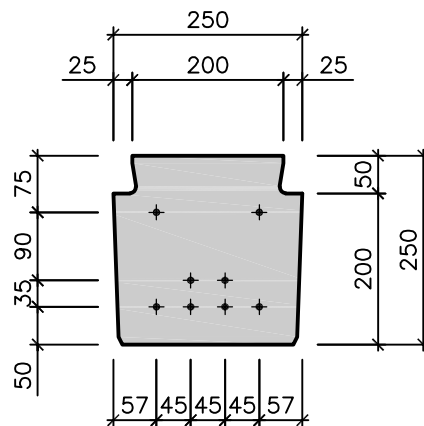
0	N.H.	ISSUED FOR INFORMATION.	01/10/20
ISSUE	BY	DETAILS	DATE

ULTRAFLOOR[®]
 ultrafloor (aust) pty ltd

DRAWING TITLE:
**ULTRAFLOOR 250M BEAM
 PROFILE**

DWG No: SDP-250M

ISSUE: 0



"ULTRAFLOOR" 250C BEAM

SCALE 1:10

ULTRAFLOOR BEAM STRAND LOCATIONS

MASONRY ANCHORS FIXING INTO BEAMS SHALL BE LOCATED TO MISS STRAND LOCATIONS.
 ULTRAFLOOR SHALL BE CONTACTED FOR APPROVAL OF FIXING TO ULTRAFLOOR BEAMS
 PRIOR TO PROCEEDING.

CONSTRUCTION TOLERANCE

ULTRAFLOOR BEAMS HAVE A ± 5 mm TOLERANCE.

0	N.H.	ISSUED FOR INFORMATION.	01/10/20
ISSUE	BY	DETAILS	DATE

ULTRAFLOOR[®]
 ultrafloor (aust) pty ltd

DRAWING TITLE:
**ULTRAFLOOR 250C BEAM
 PROFILE**

DWG No: SDP-250C

ISSUE: 0